

ATTACHMENT 2: PHASE 1A SCOPE OF WORK

Scope of Work: Phase 1A includes all solid line trails except for the yellow trail shown in Figure 1 (excerpt from the Baileys Master Trail Plan). Construct approximately 36,827 linear feet of green (beginner trail), 15,021 linear feet of blue (intermediate) trail, and 16,064 linear feet of black (advanced) trail. Beginner and intermediate trails will be constructed to U.S. Forest Service Trail Class 3 standards and advanced trails will be constructed to U.S. Forest Service Trail Class 2 standards. The attached construction documents provide trail specifications.

Construction of trail tread and attendant features (i.e. puncheon, bridge, culvert, and rock armored segments) will be in accordance with the general specifications presented within the Construction Document (attached) and fundamentally based on sustainable trail design principles promulgated by credible, recognized printed source material, including the International Mountain Bicycling Association’s handbooks: Trail Solutions (2004) and Managing Mountain Biking (2007), and the USDA Forest Service’s Trail Construction and Maintenance Notebook (2007).

Grant funding requires the majority of work for Phase 1A to be completed in the 2019 Calendar Year. Trail construction is scheduled to begin in October 2019 and be completed by January 2020. This may require the use of more than one contractor.

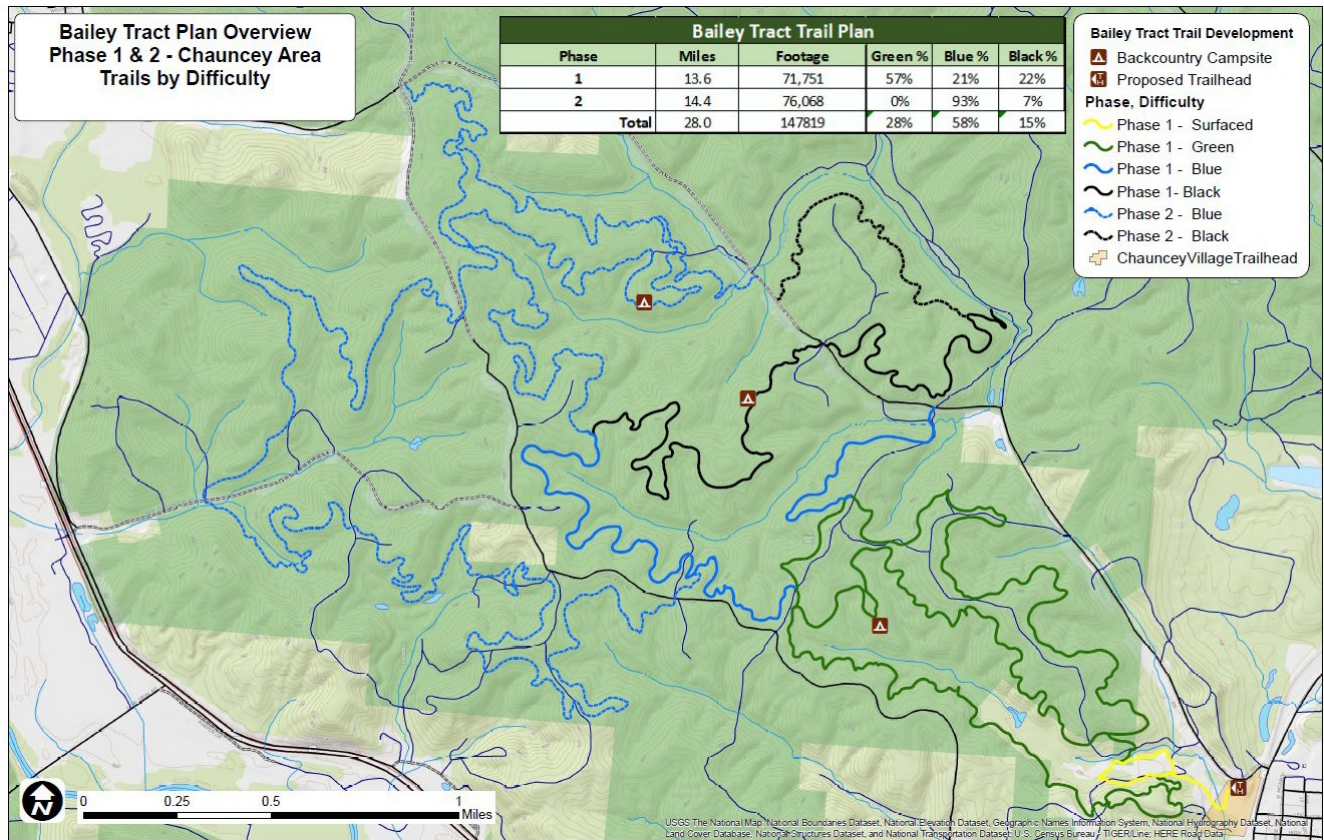


Figure 1: Phase 1A includes all solid green, blue, and black lines and excludes the yellow (surfaced) trail. Source: Bailey Tract Mountain Bike Trails Master Plan.