

## Addendum 002

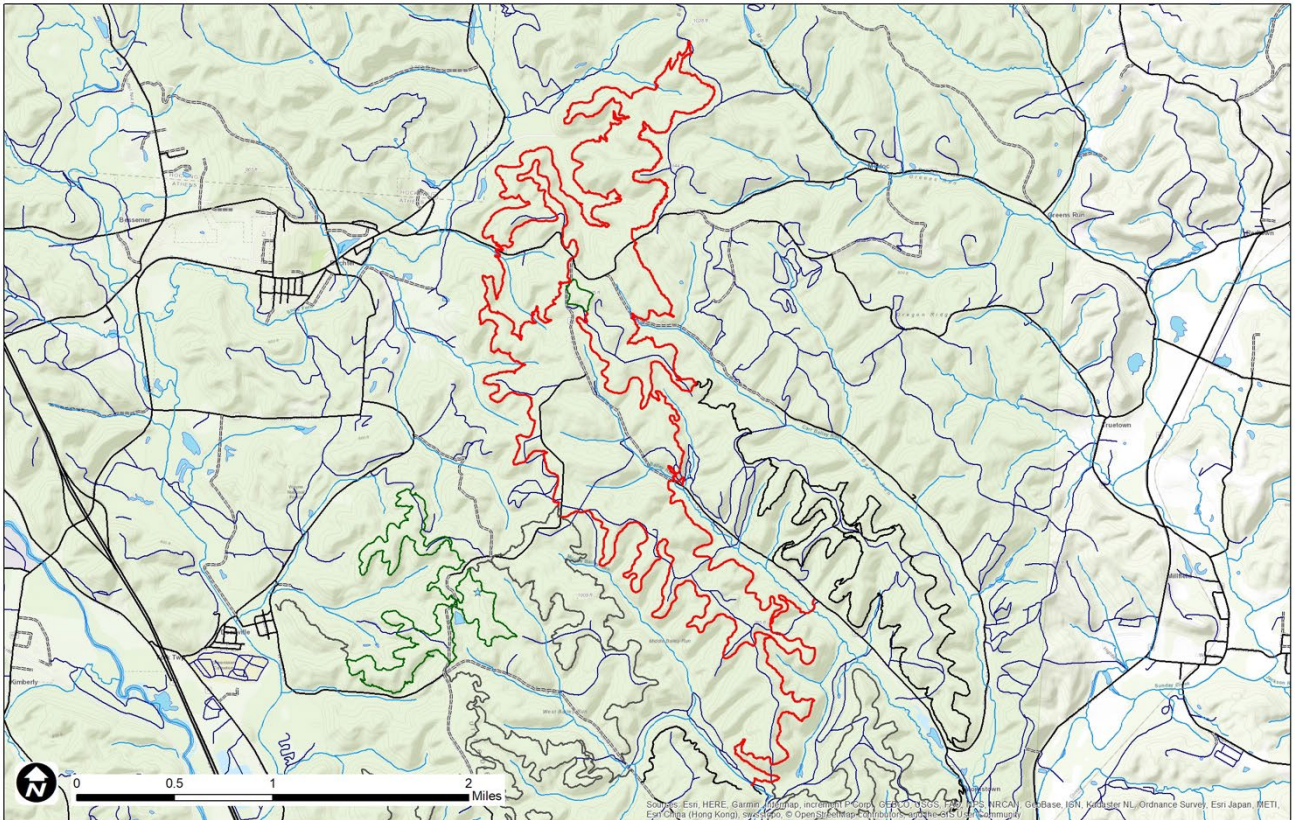
### ATTACHMENT B (revised)

## BID SCHEDULE BAILEYS TRAIL CONSTRUCTION

### *Bidders Summation of Bid Total*

#### ***Instructions:***

- Unit prices are to be provided on a per-item basis. Unit prices are fixed.
- For each work item, provide a unit price for ALL WORK ITEMS. Failure to provide a unit price for any item is grounds for invalidation of the bid.
- Quantities for each work item are estimates. Final quantities for payment will be tallied on a bi-weekly basis.
- Add all work item totals and provide a total cost at the bottom of the worksheet



Trails colored in red are projected for this construction contract

<b>Tread and Rock Armor Items</b>				
<b>WORKITEM</b>	<b>UNIT</b>	<b>UNIT PRICE</b>	<b>EST. QUANTITY</b>	<b>SUBTOTAL</b>
Less Difficult Trail Tread (Green 32-40" Width)	lin. ft.		3,200	
Less Difficult Trail Rock Armor (native materials)	lin. ft.		200	
Less Difficult Trail Rock Armor (imported materials)	lin. ft.		200	
More Difficult Trail Tread (Blue 24-36" Width)	lin. ft.		48,000	
More Difficult Trail Rock Armor (native materials)	lin. ft.		400	
More Difficult Trail Rock Armor (imported materials)	lin. ft.		800	
More Difficult Trail Tread (Blue 36-54" width; jump or flow trail)	lin. ft.		43,000	
More Difficult Trail Rock Armor (native materials)	lin. ft.		300	
More Difficult Trail Rock Armor (imported materials)	lin. ft.		400	
Most Difficult Trail Tread (Black 24-36" width; singletrack)	lin. ft.		40,000	
Most Difficult Trail Rock Armor (native materials)	lin. ft.		600	
More Difficult Trail Rock Armor (imported materials)	lin. ft.		600	
Most Difficult Trail Tread (Black 36-54" width; jump or flow trail)	lin. ft.		12,000	
<b>Additional Structures</b>				
Arched Half Culvert (10' section 48" double wall plastic culvert)	each		8	
Technical Trail Feature (native materials)	each		4	
<b>Mobilization and Bonding Items</b>				
Mobilization (include notes below if this item scales with contract size)	LS		1	
Bonding (include notes below if this item scales with contract size)	LS		1	
<b>Total:</b>				